



NEW, ROBOTIC 3D-LASER-MIC SYSTEM

... the only portable
laserscope notebook-based
software-driven system
to provide absolute
accuracy and super
sharp images for critical
quality inspection and
precise measurement
at an affordable cost.

**The most advanced 3D
imaging scope available**

- ▲ **Superior optics**
- ▲ **Rugged portability**
- ▲ **Easy to learn and use**
- ▲ **Low cost of ownership**

SHIMA

Micro-Check® Robotic 3D-Laser-Mic System

Shop-rugged, laserscope with notebook computer and preloaded, easy-to-use software



New 3D-Laser-Mic™

For inspecting and precise measuring of microscopic objects on wafers, cylinders, rolls, plates and critical components especially in high technology applications.

It's a newly engineered, patent pending laser microscopy imaging scope that delivers absolute accuracy and repeatability, distortion-free, super sharp images enabling true volume, true depth and non-contact surface roughness measurements. The laser scope scans live microscopic objects producing 3D screen images or uses white light for 2D screen views.

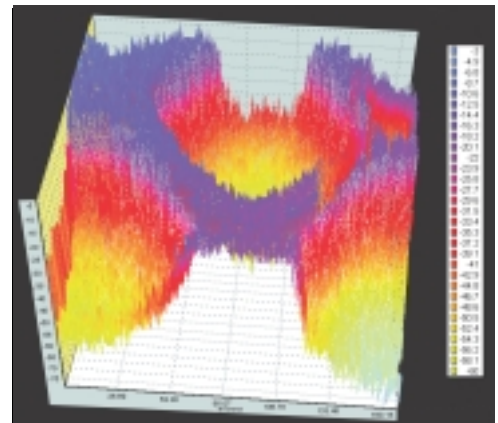
Advanced capabilities include:

- ▲ True volume
- ▲ True depth
- ▲ Non-contact surface roughness
- ▲ Multiple image comparison
- ▲ Database storage of all information/images and more.

The scope has no critical external moving parts and is engineered to incur no damage under normal shop conditions. The unit has 16-position adjustable non-slip legs for secure, hands-free positioning on any diameter cylinder or flat surface.

Micro-Check® notebook computer preloaded with 3D MAX™ Software is fully automated for absolute precision and exceptional productivity

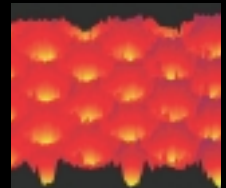
The notebook computer features the latest Pentium technology and comes preloaded with Micro-Check® 3D Max™ software. All functions are robotic . . . completely automated and software controlled. No hand focusing or adjustments are necessary . . . laser technology provides absolute focus.



3D scan with scale
Chrome etched gravure cylinder



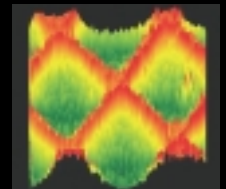
2D white light
Anilox roll



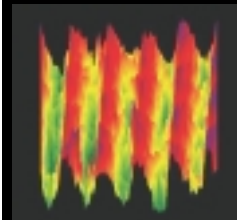
3D scan
Anilox roll



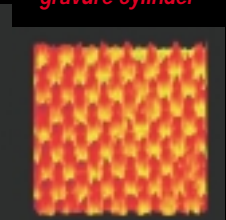
2D white light
etched
gravure cylinder



3D scan
Chrome etched
gravure cylinder



3D scan
Machinists file



3D scan
Flexoplate gradient



Especially unique and desirable for inspecting and measuring anilox rolls and flexo plates or engraved cells on rotogravure cylinders.

3D-Laser-Mic™ features exceptional optics many times more powerful than most field scopes.

Powerful light gathering objectives and absolute, automatic focusing give you the highest quality imaging possible. This scope comes with one 10x objective and can be configured with optional 2X, 5X, 20x, up. It's designed to accommodate up to three objectives simultaneously. Selection of the proper magnification is critical for your microscopic field of view and/or the critical measurement required.

This lightweight, rugged system has been designed for maximum portability and is—ideal for plants, airline travel, labs and critical microscopic inspection and measurement.

Specifications are subject to change without notice. We reserve the right to upgrade Micro-Check® components to offer you the finest quality products available.

Micro-Check® Systems and Micro-Check® X-Y-Z™ Software are available world-wide exclusively from Shima American Corp. and authorized distributors.

Exclusively from

SHIMA

Sales Division of Shima American Corp.

171 Internationale Blvd. • Glendale Heights, Illinois 60139 U.S.A.
Toll-Free Phone: 1-877-TRU-GRIT (1-877-878-4748) • Toll-Free Fax: 1-877-889-4182
Phone: 630-871-8900 • Fax: 630-871-4574
Website: www.micro-check.com • e-mail: info@shimausa.com

Micro-Check® offers a one year limited warranty or Manufacturer's warranty period for any item found defective. Items that are dropped or abused are not covered.